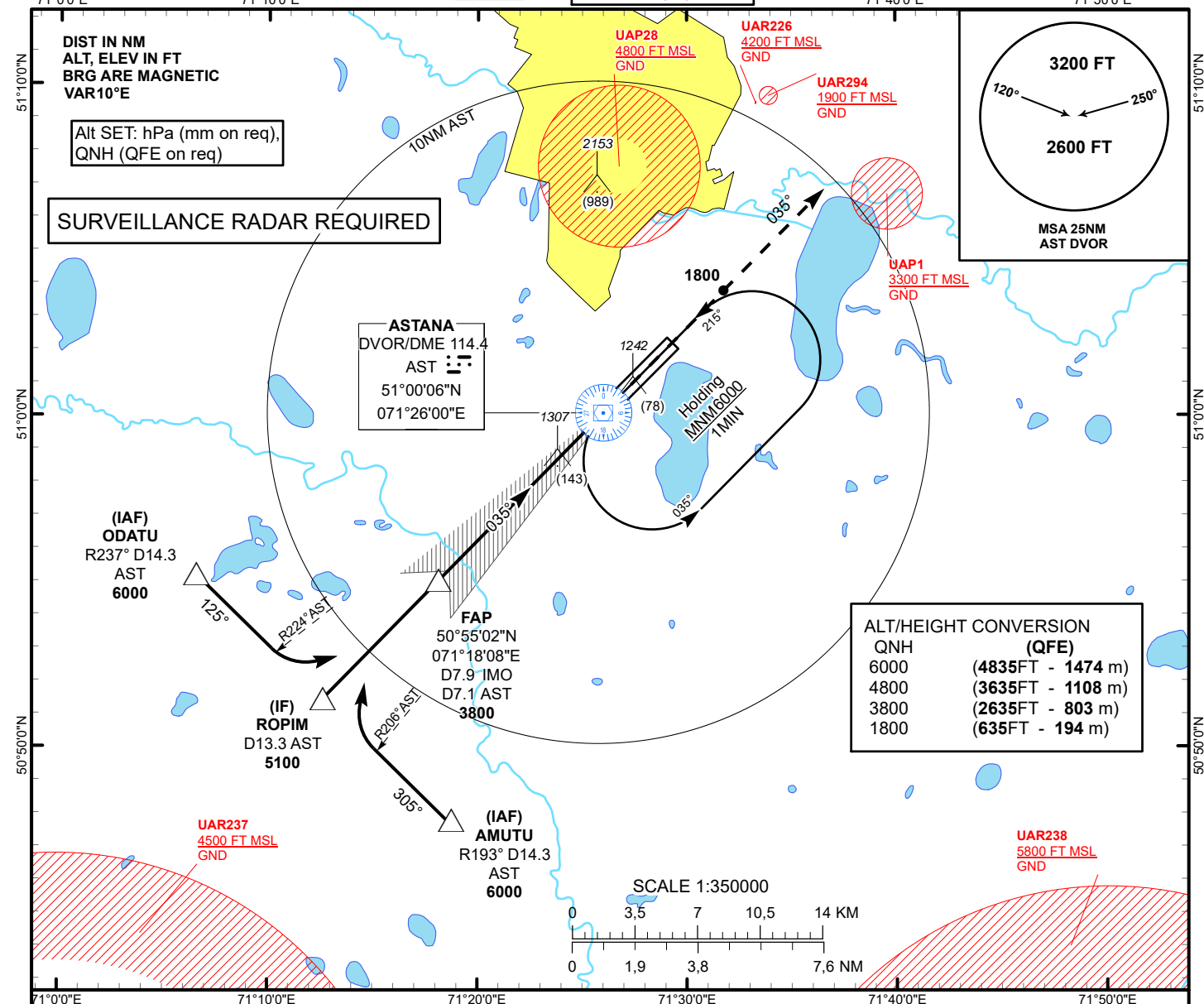


INSTRUMENT
APPROACH
CHART - ICAOAERODROME ELEV **1166FT**
HEIGHTS RELATED TO
THR RWY 04 - ELEV **1165FT**ILS
LLZ 109.5
IMO
GP 332.6
CH 32XASTANA TOWER 135.5
ASTANA APPROACH 124.6
ASTANA RADAR 120.7
ASTANA GROUND 119.6
ASTANA ATIS(EN) 129.5
ASTANA ATIS(RU) 128.3ASTANA/NURSULTAN NAZARBAYEV
INTERNATIONAL AIRPORT
ILS/DME Y CAT II, III RWY 04IF
ROPIM
D13.3 AST
5100TRANSITION ALT
10000FAP
D7.9 IMO
D7.1 AST
3800

MISSED APPROACH

Climb on track 035° to 4000 ft. After climbing 1800ft radar
vectoring will be provided.

RADIO FAILURE:

In case of RCF climb on track 035° to 2100 ft or above
outbound to D5.4 NM AST, turn RIGHT to AST. Climb to
6000 ft to AST and join to holding pattern.

Missed approach turn speed limited to 240kt IAS maximum.

DVOR/DME
AST

GP 3.0°

035°

ILS RDH 54
ELEV 1165
THR RWY 04

CHANGE: Tower FREQ, MSA.

Aircraft Category		A	B	C	D	THR - DME IMO	7.9	7.0	6.0	5.0	4.0	3.0	2.0	1.0
Straight-in Approach OCA/H	CAT I	1365(200)	1365(200)	1365(200)	1365(200)	DME AST	7.1	6.2	5.2	4.2	3.2	2.2	1.2	0.2
	CAT II	1265(100)	1265(100)	1265(100)	1265(100)	ALTITUDE	3800	3491	3161	2833	2506	2182	1859	1538
	CAT III	CAT III approved				HEIGHT	2635	2326	1996	1668	1341	1017	694	373
DME IMO ZERO RANGED TO THR RWY 04														
Aerodrome Operating Minima DH ft x RVR(CMV)	CAT I													
	CAT II													
	CAT III					GS		Kt	80	100	120	140	160	180
						Rate of descent		ft/min	420	530	630	740	840	950

ASTANA
ILS/DME Y CAT II, III

AERONAUTICAL DATA TABULATION

ILS approach to RWY04 from AST VOR, ROPIM, ODATU, AMUTU	
Fix/point	Coordinates
AST DVOR/DME	51° 00' 05.6"N 071° 26' 00.4"E
IMO D7.9 AST D7.1 (FAP)	50° 55' 01.6"N 071° 18' 08.2"E
ROPIM (IF) AST D13.3	50° 50' 38.0"N 071° 11' 20.0"E
ODATU (IAF) R237°AST D14.3 AST	50° 54' 26.7"N 071° 05' 18.1"E
AMUTU (IAF) R193°AST D14.3 AST	50° 46' 49.0"N 071° 17' 20.9"E
THR RWY 04	51° 00' 40.87"N 071° 26' 55.41"E
IMO LOC	51° 02' 24.7"N 071° 29' 37.4"E